

Helping **Young** **Smokers** *Quit*

Identifying Best Practices for Tobacco Cessation

Early Abstinence Among a Cohort of Youth Smokers in Community-Based Smoking Cessation Programs

Sherry L. Emery, PhD, Susan J. Curry, PhD, Amy K. Sporer, MS,
Jungwha Lee, MS, Oksana Pugach, MS, Michael L. Berbaum, PhD,
Robin J. Mermelstein, PhD

**University of Illinois at Chicago
Institute for Health Research and Policy**

Paper presented at the American Public Health Association, Washington, DC, November 3-7, 2007.

Helping Young Smokers Quit is a national program supported by the Robert Wood Johnson Foundation, the National Cancer Institute and the Center for Disease Control and Prevention with direction and technical assistance provided by UIC.

TODAY'S GOALS

- Brief Review: What is HYSQ?
- Characterize treatment seekers
- Describe analyses of factors associated with early abstinence
- Discuss implications for design of cessation programs

Helping Young Smokers Quit:

Identifying Best Practices for Tobacco Cessation

- Multi-year, Three-Phase Initiative
- Funded by Robert Wood Johnson Foundation, National Cancer Institute, Centers for Disease Control and Prevention
- Based at University of Illinois at Chicago

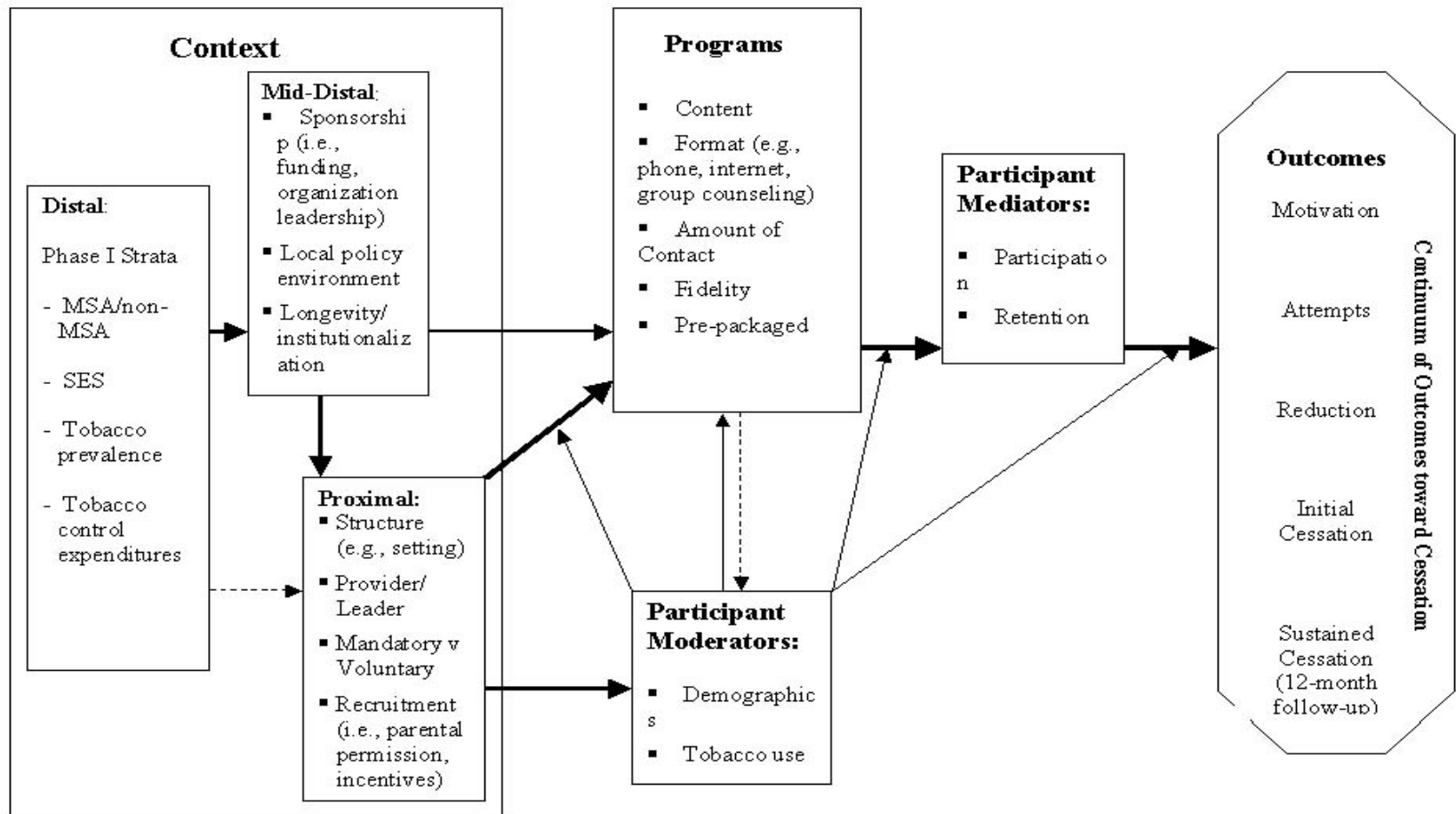
HYSQ Mission and Activities

- Overall Mission:
 - Accelerate knowledge about effective interventions for youth tobacco cessation
- Activities
 - Phase I: National survey of programs
 - **Phase II: Program evaluations**
 - Phase III: Sustainability survey
 - Synthesis of 'best practices' in cessation programming
 - Self-evaluation tool-kit

Phase II Goals

- Evaluate a sample of “real world” youth cessation programs
 - want viable, replicable, and credible programs (potential exemplars)
- Identify characteristics of programs that show promise for improving smoking cessation outcomes among enrolled youth
- Identify resources and barriers to successful youth cessation program implementation

PHASE II: Logic Model



PHASE II: Data Collection Effort

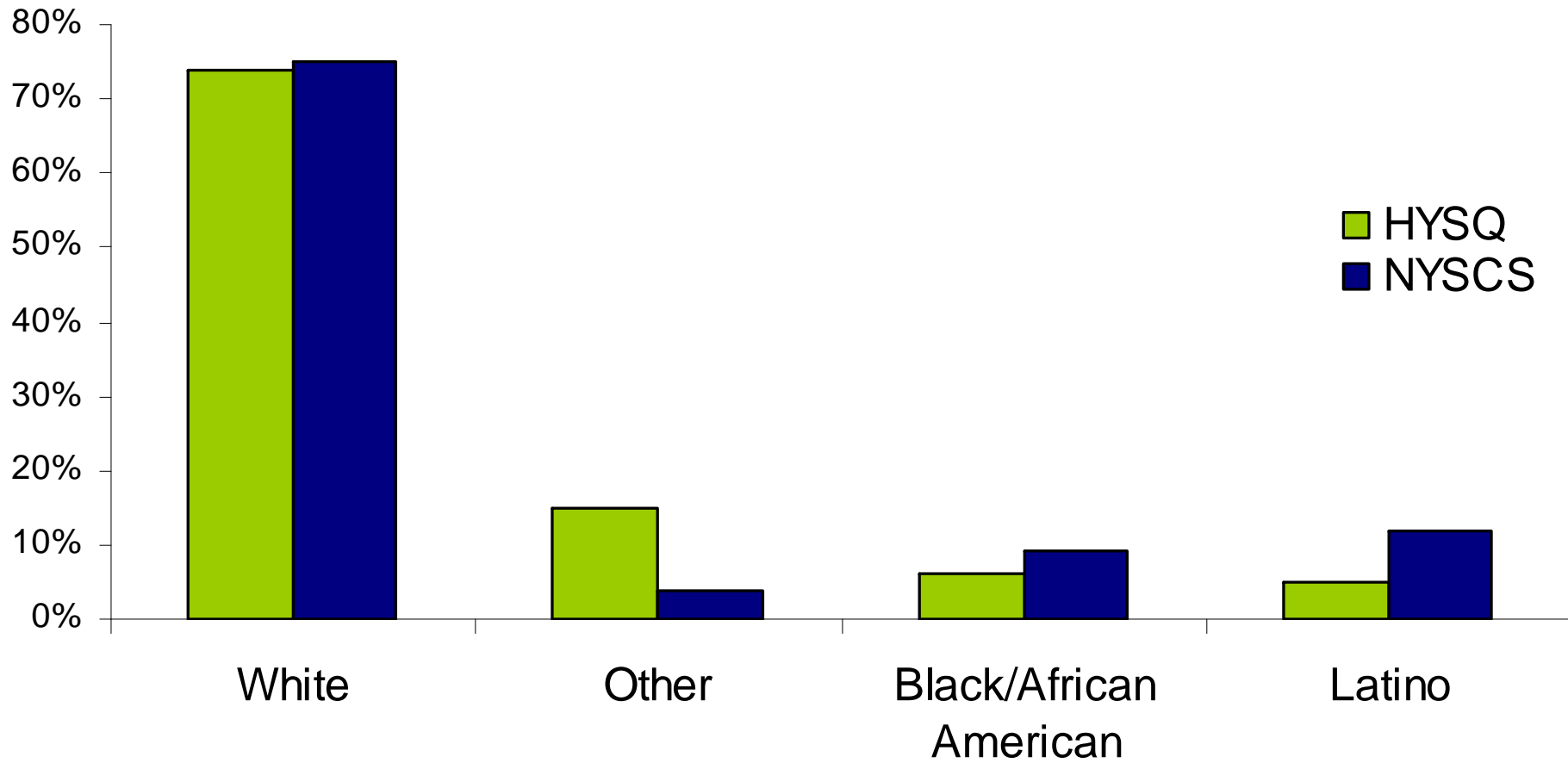
- Youth participant surveys
 - Baseline (n=878)
 - End of the program (n=801),
 - Follow-ups at 6-months (n= 672) and 12-months (n=601)
- Program leader interviews (n=80)
- Organization leader (n=64)
- Community leaders (n=94)
 - School Board
 - Health Department
 - Juvenile justice
- Local ordinances from archival research

Constructs Measured on Youth Surveys

1. Demographics
2. Smoking History
3. Attitudes about Smoking
4. Motivation/Efficacy
5. Quitting History
6. Social Context/Smoking Environment
7. Social Support for Quitting
8. Grades/Academic Performance
9. Activities
10. Health and Fitness
11. Psychological Factors

PHASE II: Who are the Treatment Seekers?

HYSQ: 52% female (NYSCS: 46% female)



PHASE II: School and Risky Behaviors

School-related Variables

- 94% currently enrolled in school
- 68% average or below average grades
- 68% ever suspended or expelled from school
- 28% expect to attend 4-year college

Risky Behaviors

- 73% live with another smoker
- 57% binge drank in the past month
- 66% out \geq 3 nights/week

PHASE II: Smoking and Quitting Behaviors

Smoking Behaviors

- Average age of 1st cigarette: 12 years old
- 55% smoke daily
- 78% smoke first cigarette within hour of waking up
- Average 6 cigs/day,
Average 5 days/week

Quitting Behaviors

- 56% want to quit for good, but not yet quit
- 20% say they definitely will not smoke in 5 yrs
- 74% are in the program voluntarily
- 44% plan to quit in next 30 days
- 77% plan to quit in next 6 months

Modeling Challenges

- LOTS of data
 - 231 variables measuring 11 constructs from baseline surveys
- Missing Data (among 53 variables on short list)
 - Item non-response low (< 5%)
 - Potentially 43% missing cases (487 respondents) if cases are deleted for any missing data

Solutions/Approaches to Challenges

- Impute missing data
 - Used SAS IVE Ware
 - Imputed 5 datasets
 - Used Mean of 5 for imputed values of variable/respondent
- Backward Stepwise Selection to Build Models
 - Started with 53 variables, selected from
 - theoretical framework/logic model, and
 - block-wise variable comparisons and bi-variate associations

Predictors of Early Abstinence

(n=833) controlling for age, race, gender

Baseline Predictor	Measure	OR
Amount smoked (ref = <1-5 cig/day)	6-10	0.50
	>10	0.06*
Smoke by myself (ref = never)	Often	0.29*
Confidence (ref = high)		2.13
Stages of Change (ref = precontemplation)	Preparation	2.73
	Action	10.82
Think public places should be smoke free (ref = definitely not)	Probably yes	3.61
	Probably not	2.60
Lives with Smoker		0.55
Activities (ref = sports only)	Art/math only	3.18
	Mixture	2.80
Percent of sessions attended	(0-100)	2.61

Predictors of Daily Smoking at End of Program

(n=642) controlling for age, race, gender

Baseline Predictor	Measure	OR
Nicotine Dependency	Continuous (higher=dependent)	1.5
Time to first cigarette (ref = <15 mins)	30+ mins	0.36*
How often smoke	(5-15)	1.27*
Daily smoker at baseline		6.40*
Use promotional items		1.65*
Smoking Expectancy Scale	Higher value=agree	0.67
Stages of Change (ref = precontemplation)	Contemplation	0.43*
	Preparation	0.52
Stick to program	Definitely yes	0.66
School Performance (ref = average)	Below average	1.75
	Much better than average	3.40

Predictors of Motivation at End of Program

(n=766) controlling for age, race, gender

Baseline Predictor	Measure	OR
Time to first cigarette (ref = <15 mins)	15-30 mins	0.50
Smoking Expectancy Scale	Higher value=agree	0.66
Motivation	High vs. low	5.98*
Stick to program	Definitely yes	1.81
Girl/boy friend smokes and/or is supportive (ref=don't have g-b friend)	Non-smoker and very supportive	2.52*
Suspended or expelled in past 6 months		0.67
Ever used behavioral therapy for quitting		1.45
7-day abstinent at EOP		6.30*
Interaction of 7-day EOP abst and BL Motivation		NS

Predictors of Confidence at End of Program

(n=763) controlling for age, race, gender

Baseline Predictor	Measure	OR
Nicotine Dependency	Continuous (higher=dependent)	0.71
Smoke by myself (ref = never)	Sometimes	0.37
	Often	0.44
Confidence	High vs. Low	2.64*
Stick to program	Definitely yes	1.66
Girl/boy friend smokes and/or is supportive (ref=don't have g-b friend)	Non-smoker/very supportive	2.24*
	Smoker/very supportive	1.79
Motivation	High vs. Low	1.92
7-day abstinent at EOP		4.90*
Interaction of 7-day EOP abst and BL Confidence		0.36

Construct	<i>Baseline Predictor</i>	Early Abstinence	EOP Daily Smoking	Motivation	Confidence
Smoking Hist	Amount Smoked	X			
	Daily Smoking		X		
	How often Smoke		X		
	Nicotine Dep		X		X
	Time to 1 st Cig		X	X	
	Stages of Change	X	X		X
	Confidence	X			X
	Motivation			X	
Attitudes about smok.	Smoking expect.		X	X	
	Public places SF	X			
Social Context	Smoke by self	X			X
	Lives with smoker	X			
Social Sup.	G/B friend support			X	X
	Program Attend.	X			
	Stick to program		X	X	X
Acad. Perf.	School performance		X		
Activities	Extracurriculars	X			
	Used promo items		X		
Quit History	Used beh'l tx			X	

Conclusions/Limitations

- Our results are consistent with other research on predictors of youth cessation
 - Nicotine Dependence and other measures of addiction are important predictors of quitting behavior
- Commitment to program seems important
- This is a first stage; multi-level models that incorporate other data may show different results

Conclusions/Limitations

- Our findings represent the most comprehensive exploration of factors associated with youth quitting to date